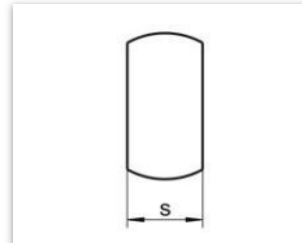
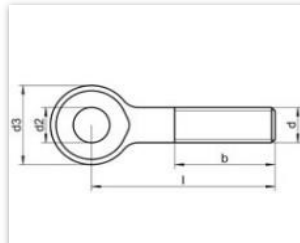


śruba nierdzewna oczkowa

DIN: 444b, PN 82425.

UWAGI:

- A2
- A4



d2	6,00	8,00	10,00	12,00	16,00	18,00
d3	14,00	18,00	20,00	25,00	32,00	40,00
s min.	6,85	8,85	11,82	13,82	16,82	21,79
b ≤ 125	18,00	22,00	26,00	30,00	38,00	46,00
b > 125	-	28	32	36	44	52
L/φ	M6	M8	M10	M12	M16	M20
12						
14						
16						
18						
20						
22						
25						
30	●	●				
35	●					
40	●	●	●			
45		●	●			
50	●	●	●	●		
55		●	●			
60	●	●	●	●	●	
65		●	●	●		
70	●	●	●	●	●	●
75						
80		●	●	●	●	●
85						
90		●	●	●	●	●
95						
100		●	●	●	●	●
110			●		●	
120			●	●	●	●
130				●		●
140				●		●
150				●		●