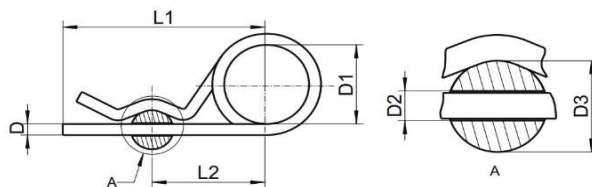


zawlecza DIN 11024 z kółkiem A4

UWAGI:

- A2
- A4



D2	D	D1	D3	L1	L2	A2/A4
2.5	2.25	20	9-11	42	24	● ●
3.2	2.80	20	>11-14	48	26	● ●
4.0	3.60	20	>14-20	64	32	● ●
5.0	4.50	25	>20-26	80	39	● ●
6.3	5.60	25	>26-34	97	45	● ●
7.0	6.30	30	>34-45	125	56	● ●
8.0	7.00	30	>45-56	150	63	● ●