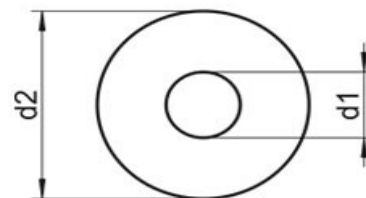
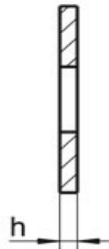


podkładka płaska poszerzana nylonowa

DIN:9021

UWAGI:

● nylon



d	do gwintu	d2	h	Nylon
5.3	M5	14.57	1.2	●
6.4	M6	17.57	1.6	●
8.4	M8	23.48	2.0	●
10.5	M10	29.48	2.5	●
13.0	M12	37	3.0	●

www.kastal.com.pl