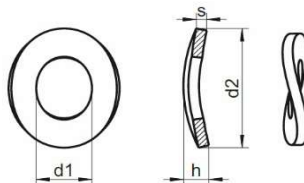


podkładka nierdzewna falista  
DIN 137B, PN 82037; 82038.

UWAGI:

- A2
- A4



d	do gwintu	d1	d2	h min	h max	s	A2
3.0	M3	3.2	8	0.8	1.6	0.5	●
3.5	M3.5	3.7	8	0.9	1.8	0.5	●
4.0	M4	4.3	9	1.0	2.0	0.5	●
5.0	M5	5.3	11	1.1	2.2	0.5	●
6.0	M6	6.4	12	1.3	2.6	0.5	●
7.0	M7	7.4	14	1.5	3.0	0.8	●
8.0	M8	8.4	15	1.5	3.0	0.8	●
10.0	M10	10.5	21	2.1	4.2	1.0	●

www.kastal.com.pl