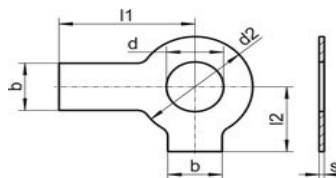


podkładki nierdzewne podwójnie odginane

DIN 463, PN 82022.

UWAGI:

- A2
- A4



d1	do gwintu	d2	s	l1	l2	b	A2/A4
4.3	M4	9.0	0.38	14	6.5	5.0	● ●
5.3	M5	10.0	0.50	16	8.0	6.0	● ●
6.4	M6	12.5	0.50	18	9.5	7.0	● ●
8.4	M8	17.0	0.75	20	11.0	8.0	● ●
10.5	M10	21.0	0.75	22	13.0	10	● ●
13.0	M12	24.0	1.00	28	15.0	12	● ●
15.0	M14	28.0	1.00	28	18.0	12	● ●
17.0	M16	30.0	1.00	32	20.0	15	● ●
19.0	M18	34.0	1.00	36	21.0	18	● ●
21.0	M20	37.0	1.00	36	23.0	18	● ●
23.0	M22	39.0	1.00	42	25.0	20	● ●
25.0	M24	44.0	1.00	42	29.0	20	● ●
28.0	M27	50.0	1.60	48	23.0	23	● ●
31.0	M30	56.0	1.60	52	32.0	26	● ●
34.0	M33	60.0	1.60	56	34.0	28	● ●
37.0	M36	66.0	1.60	60	38.0	30	● ●
40.0	M39	72.0	1.60	64	41.0	32	● ●

www.kastal.com.pl