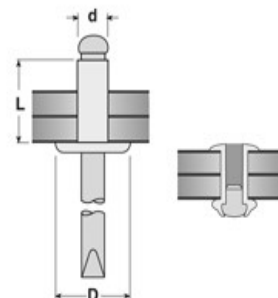
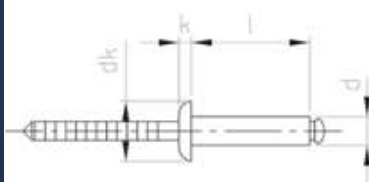


nit zrywalny ALU-STAL
z powiększonym kołnierzem
DIN: 7337alustalpk

UWAGI:

- A2
- A4
- Alu.
- Stal



d	l	dk	k	kl	s	z	Alu	Stal
3.2	8	9.5	3.3	3.0-5.0	980	680	●	●
	10			5.0-7.0			●	●
	12			7.0-9.0			●	●
	14			9.0-11.0			●	●
4	8	10.0	4.1	3.0-4.0	1850	1300	●	●
	10			4.0-6.0			●	●
	12			6.0-8.0			●	●
	14			8.0-10.0			●	●
	16			10.0-12.0			●	●
4	8	12.0	4.1	3.5-4.5	1850	1300	●	●
	10			4.5-6.5			●	●
	12			6.5-8.5			●	●
	14			8.5-10.5			●	●
	16			10.5-12.5			●	●
	18			12.5-14.5			●	●
4.8	8	14	5	3.0-4.0	2950	2170	●	●
	10			4.0-6.0			●	●
	12			6.0-8.0			●	●
	14			8.0-10.0			●	●
	16			10.0-12.0			●	●
	18			12.0-14.0			●	●
	20			14.0-16.0			●	●
	26			16.0-21.0			●	●
	30			21.0-26.0			●	●
35	26.0-31.0	●	●					
4.8	10	16	5	4.0-6.0	2950	2170	●	●
	12			6.0-8.0			●	●
	14			8.0-10.0			●	●
	16			10.0-12.0			●	●
	18			12.0-14.0			●	●
	20			14.0-16.0			●	●
	26			16.0-21.0			●	●
	30			21.0-26.0			●	●
	35			26.0-31.0			●	●