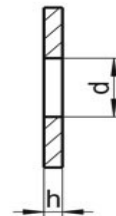
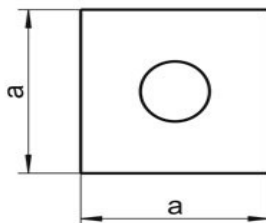
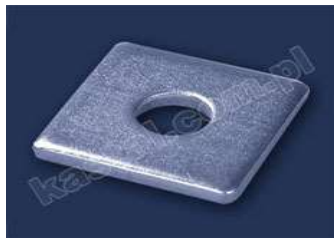


podkładka nierdzewna kwadratowa
DIN 436, PN 82010.

UWAGI:

- A2
- A4



d	do gwintu	a	h	A2/A4
11	M10	30	3	● ●
13.5	M12	40	4	● ●
17.5	M16	50	5	● ●
22	M20	60	5	● ●
24	M22	70	6	● ●
26	M24	80	6	● ●

www.kastal.com.pl